

CERTIFIED RECORD OF LAND CORNER MONUMENTATION

INDEX No. B-4

History of original corner establishment:

None. Corner established this survey.

DIAGRAM

T11S R35E
NE 1/16
•
S6
1992
PLS 2405

Description of Corner Evidence Found:

None. Corner established this survey.

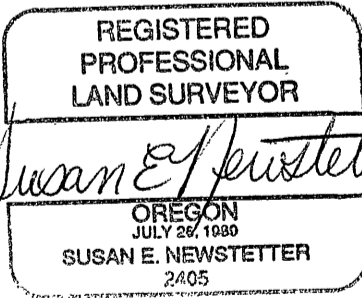
Description of monument and accessories I established to perpetuate the original location of this corner:

Set 2-1/2"x30" aluminum pipe with 3-1/4" aluminum cap, stamped as shown on the DIAGRAM, 26" in the ground.

From Which:

Ponderosa Pine, 12" dia., bears N77°45'E, 17.9 ft., scribed: NE 1/16 S6 BT
Ponderosa Pine, 12" dia., bears S75°15'W, 33.2 ft., scribed: NE 1/16 S6 BT

Measurements to BT's taken with a magnetic compass, declination 20° East, and a nylon clad steel tape. Set steel fence post with Land Survey Monument (54-9) and Property Boundary (54-2) signs 35' north and 5' west of the monument. Nailed a brass washer stamped PLS 2405 on blaze above BT scribe as taken this survey. Nailed Bearing Tree (54-3) signs above blaze and Land Survey Monument (54-9) signs on back of each tree as required. Painted a 6" red band above Bearing Trees signs and painted blaze red.



Susan E. Newstetter
Exp: 12/31/94

This work was performed by:
Susan E. Newstetter PLS 2405
Witnessed by: D. Mitchell Ferguson
and Rick Saul
November 3, 1992
Refer to Grant Co. Survey No.: 1239

Office of Surveyor County of Grant
State of OR I hereby certify that the within instrument was
filed in this office for record on the 20 day of Jan, 1993
Robert D. [Signature] by _____
(COUNTY OFFICIAL) (DEPUTY)